



Penny Naldrett

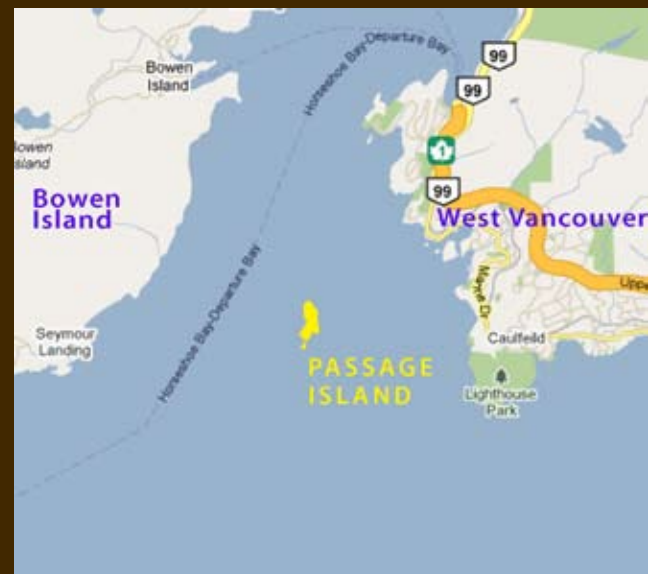
Bowen Island and BC Coastal Real Estate



WATERFRONT OASIS

30 Minutes by Boat from Granville Island
Lot 36, Passage Island \$729,900

Cool, Clean, Contemporary. This could be the DWELL home of Passage Island- a west coast contemporary log home in a stunning natural setting. The two-story home features the natural beauty of squared log construction accented with the cool look of Galvalum siding and roof. The interior features massive squared log timber frame, concrete hearth and counters and floor to ceiling folding glass doors that open up onto the 560SF deck. The western water view overlooks Bowen Island and spectacular sunsets. The second floor features a master bedroom, ensuite, second bedroom, library and zen deck. Steps from the cabin lead down through the trees to West Bay beach. This is a turn-key waterfront oasis from the city just 30 minutes by boat from Granville Island and 10 minutes by boat from West Vancouver.



inspired by island life

604 947 2725
604 803 4400



penny@bccoastalliving.com

Discover the Islands of the Howe Sound
www.bccoastalliving.com